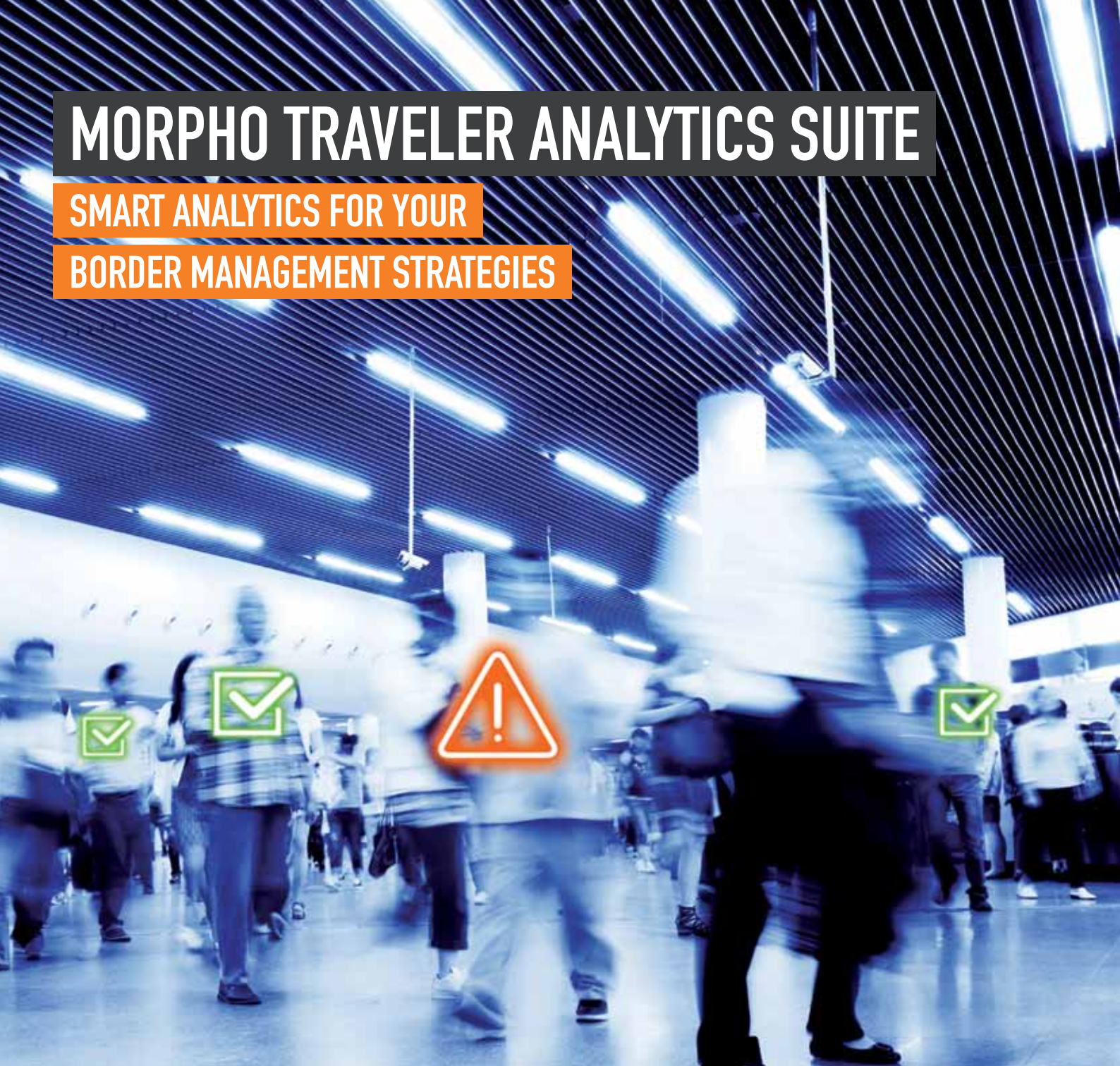


MORPHO TRAVELER ANALYTICS SUITE

SMART ANALYTICS FOR YOUR

BORDER MANAGEMENT STRATEGIES



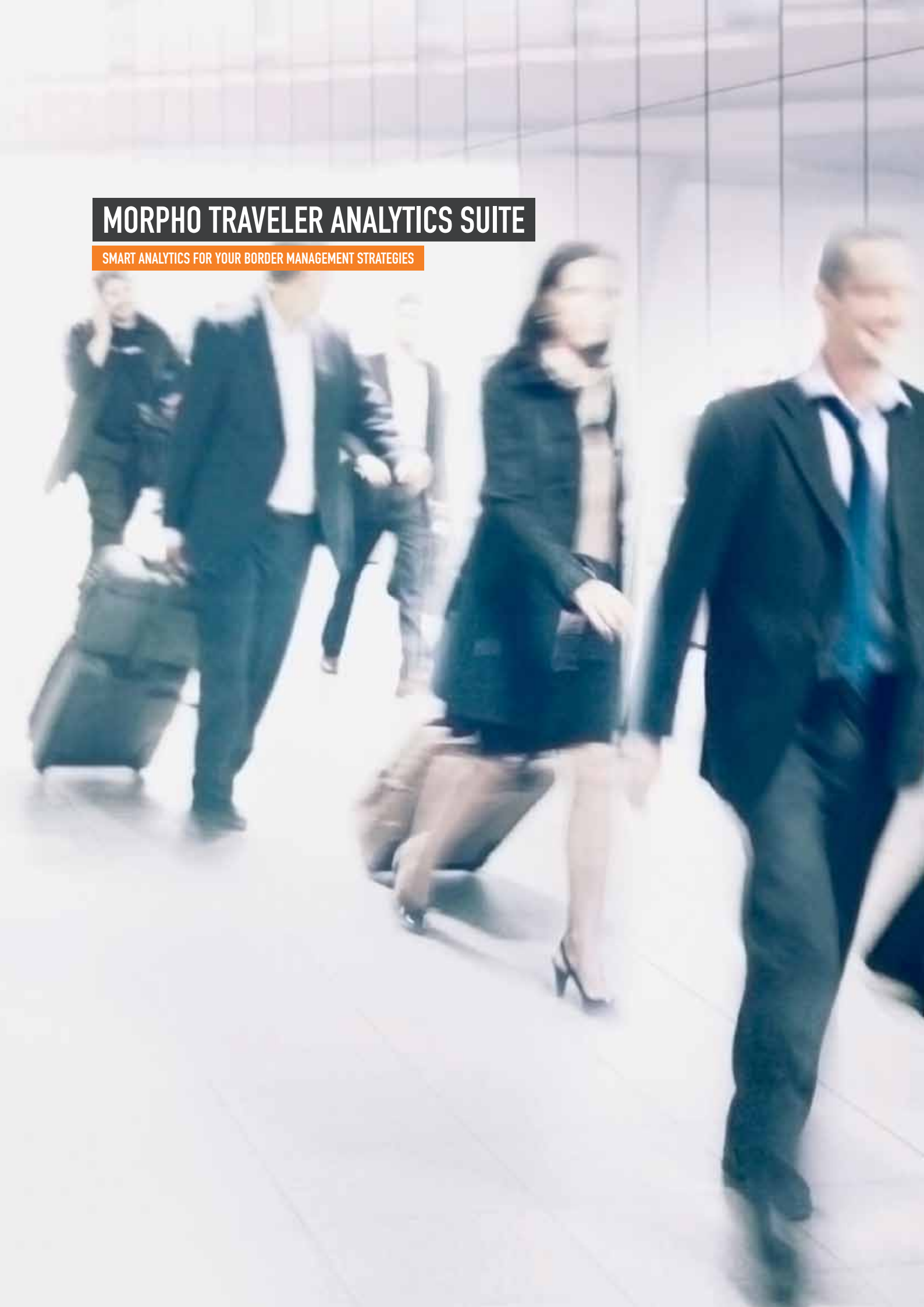
GOVERNMENT AGENCIES FACE TODAY CONFLICTING OBJECTIVES:

securing borders while facilitating travelers' crossing those same borders. Threat assessment has become the cornerstone of border management. As soon as a journey is booked, API and PNR data can be cross-checked against external reference databases and analyzed via risk assessment for security clearance. This complex process must be performed swiftly, with no error allowed.

To meet this challenge, Morpho has designed **Morpho Traveler Analytics Suite**, a comprehensive traveler data collection and risk assessment solution. It offers a unique and modular risk analysis approach to improve the management of borders, in compliance with law and respecting privacy.

MORPHO TRAVELER ANALYTICS SUITE

SMART ANALYTICS FOR YOUR BORDER MANAGEMENT STRATEGIES





FOR AN EFFECTIVE PASSENGER

DATA PROJECT

Morpho Traveler Analytics Suite addresses all the critical steps of an effective passenger data management project. It helps government agencies detect persons of interest and identify suspicious patterns through:

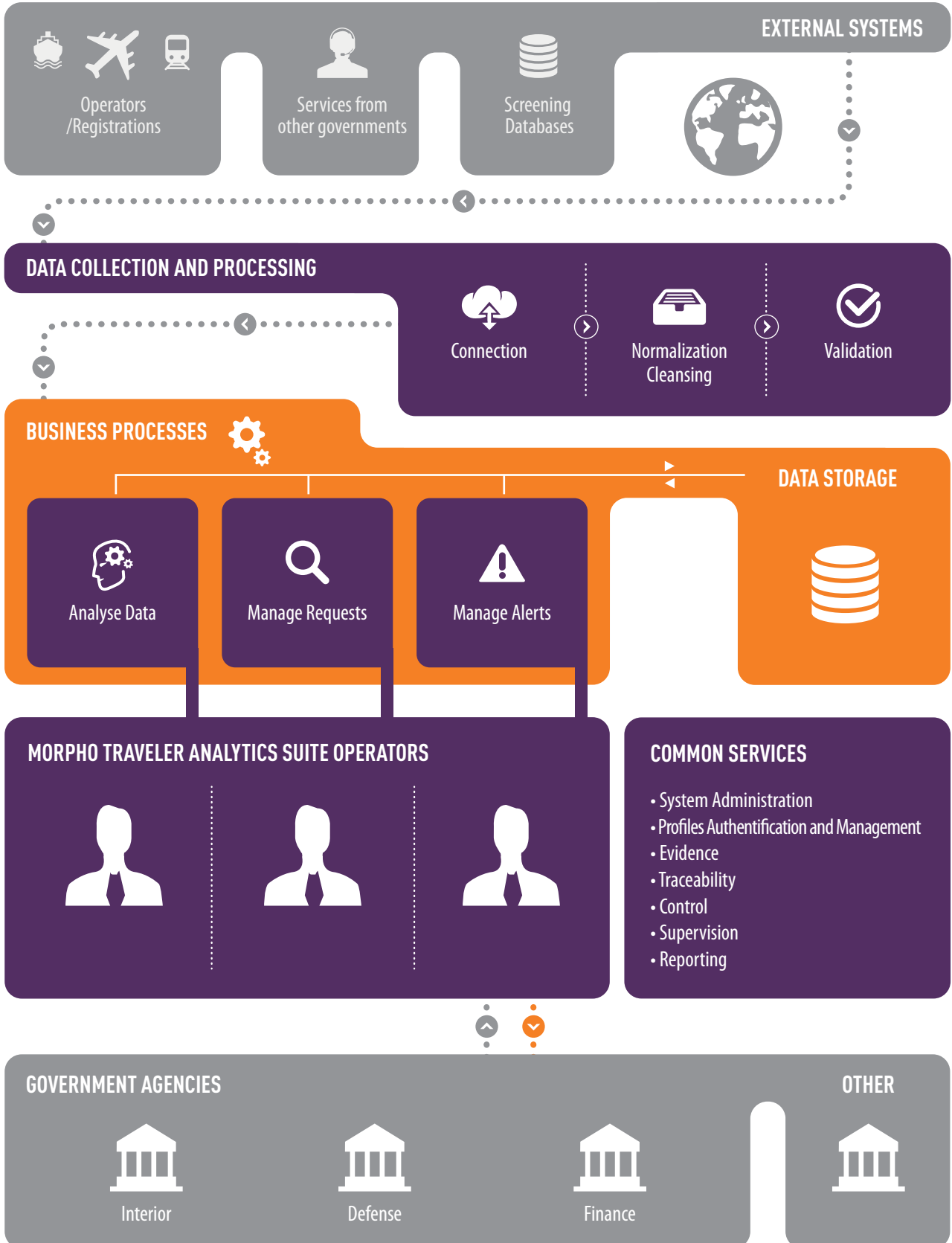
- Advanced Passenger Information – Passenger Name Record (API-PNR) **data collection and processing**
- **Smart data analysis**
- **Alert management**

These functions are delivered by Morpho Traveler Analytics Suite as a set of Commercial Off-The-Shelf modules. Each project can include one, two or all modules, for integration into existing processes and systems. Morpho is dedicated to giving you all the support you need throughout your project.

The suite is designed to be compatible with a wide range of open source architecture, short-term deployment and regulatory scenarios - including processes involved in the concept of the Passenger Information Unit defined in the future European Union API-PNR directive.



A SMART AND COMPREHENSIVE SOLUTION



Data collection and processing

Through flexible and standard connectors, the data collection and processing functionalities offer easy and reliable recovery of passenger API-PNR data, through existing networks, for multiple data sources and formats. In addition, it filters the data according to both local regulations and privacy rules. It also standardizes controls and consolidates data to optimize the analysis.

Morpho Traveler Analytics Suite architecture (data storage, security features) allows for a rigorous auditing of compliance with data privacy rules.

Smart data analysis

This is at the core of any passenger API-PNR data management project. It involves two key steps:

Traveler data screening

To detect persons or data of interest, passenger information is compared with external databases (wanted persons or information of interest) using a fuzzy logic engine to maximize the chances of relevant matching.

Traveler data targeting

Besides classical multi-criteria search functionalities, more elaborate risk analysis can be performed on passenger data to detect suspicious behavior and patterns of interest, requiring particular attention. This is managed and controlled by operators according to predefined business rules. It can also detect atypical patterns and anomalies.

These advanced search and data analysis functions are carried out using a simple and intuitive operator interface offering:

- Powerful functionalities for complex risk analysis, easy to set up and build upon.
- Data sharing and restriction between different sets of users through strict management of access rights.
- Advanced reporting tools to constantly measure the effectiveness of cross-checks and risk analysis performed on the platform.

Alert management

In case of a positive match with a wanted person or following a positive risk analysis outcome, an alert management process is carried out for the corresponding passengers.

This process is matched to each customer's business rules. Indeed, it implements levels of alerts qualification and validation in accordance with the customer's procedures.

Based on an effective workflow engine, associated with a user friendly operator interface, Morpho Traveler Analytics Suite offers an efficient alert management process, in a fully monitored and auditable way for continuous improvement.



KEY BENEFITS

- A comprehensive and modular solution
- Unique analytical capabilities
- Easy to use advanced operator interface
- Open source technologies, adaptable to the customer's needs and processes
- High availability architecture
- Privacy by design
- Real-time processing of large data flows

MEETING THE CHALLENGES

OF YOUR PROJECT

Morpho gives you all the support you need throughout the project, such as:

- Definition of certificates and protocols.
- Definition of standards and standardization of processes.
- Analysis of legal framework (law and privacy).
- Interfacing with external systems (SIS, Interpol...).
- Establishment of a standardized communication platform between airlines and government agencies.
- Compliance upgrade of airlines interfaces to the standardized communication platform.
- Support and guidance to airlines throughout the transition phase.

For further discussion about your project, contact us at: MorphoTAS@morpho.com

A TRUSTED PLAYER AT THE SERVICE

OF GOVERNMENTS

Morpho provides more than 450 government agencies with effective systems, for large and critical applications, and for the management of sensitive data:

UIDAI* program, India: the World's largest identity management program

Established by the Indian Planning commission in 2009, this program has the ambitious aim of identifying the 1.2 billion residents of the country, and to provide nationwide secure and reliable access to social benefits, services and political rights.

Morpho was selected to provide an innovative and powerful identity management system, implementing a multi-biometric engine based on fingerprint and iris. Our system has been sized to handle one million registrations per day. This is a throughput 50 times higher than the next most efficient automated biometric identification systems deployed in the world. Since the deployment of the system, over 600 million residents have been registered and as many unique identifiers generated.

** UIDAI : Unique Identification Authority of India*

FBI NGI* system, USA: Morpho serving the world's largest AFIS program

Launched in 1996, this criminal investigation and justice program includes more than 70 million registered people. It is consulted daily by many federal police forces as well as other agencies to perform background checks. Selected through a particularly demanding technical process, the biometric system supplied and deployed by Morpho performs between 50,000 and 80,000 searches per day.

In May 2013, the FBI confirmed its confidence in Morpho's know-how to improve system performance. Morpho provides its latest algorithms to process and match latent finger and palm prints. The FBI's database is the largest criminal fingerprint and palm print database in the world.

Our algorithms keeps changing the face of crime-solving by greatly improving the volume, speed, and accuracy of matching latent and other crime-scene prints against the FBI's databases of finger and palm prints.

NGI: Next Generation Identification*



KEY MISSIONS, KEY TECHNOLOGIES, KEY TALENTS

Morpho

Téléphone : +33 (0) 1 58 11 25 00 – Fax : 33 (0) 1 58 11 25 00 – www.morpho.com
Siège social : 11, boulevard Gallieni – 92130 Issy-les-Moulineaux
Société Anonyme au capital de 159.876.075 euros – 440 305 282 RCS Nanterre

